



JST Information Services

Let's discover what you want to know



Explore Japan's academic journals



✉ contact@jstage.jst.go.jp

<https://www.jstage.jst.go.jp/browse/-char/en>

J-STAGE is an online platform providing easy access to a wide variety of full-text academic articles. Over 1,800 of Japan's academic societies use J-STAGE to publish their e-journals.



95%
of articles are
free access



454.5 million
articles downloaded
annually
(As of March, 2021)



Diverse content

- Publications on J-STAGE covers a wide variety of academic fields.

Databases linked to J-STAGE

- J-STAGE journals are listed in: CiNii, DOAJ, Web of Science, Scopus, PubMed.

My J-STAGE

- Free account service called "My J-STAGE" provides bookmark and alert function.



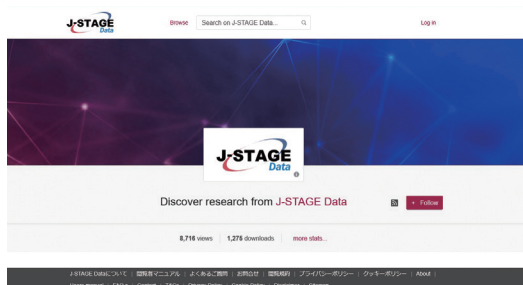
Open access to research data



✉ data-contact@jstage.jst.go.jp

<https://jstagedata.jst.go.jp/>

J-STAGE Data is a data repository that lists and publishes data related to articles on J-STAGE, creating new value by sharing and reusing data following the global trend towards open science.



Data can now be viewed, cited, and reused independently of the paper

- Data is automatically assigned a DOI and distributed worldwide as open access data.
- Data can be reproduced, shared, and reused under the conditions specified by the copyright holder.
- Easier to view, find, cite, and use data.



Comprehensive gateway linking multiple scientific and technological databases



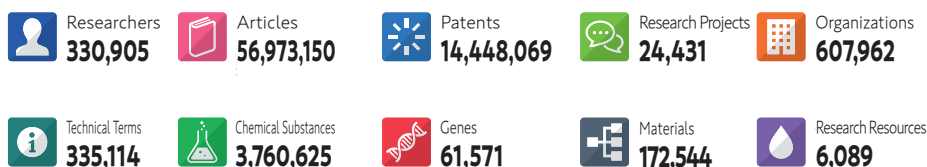
✉ helpdesk@jst.go.jp

<https://jglobal.jst.go.jp/en>

J-GLOBAL is a service based on the concept of “Linking, Expanding, and Sparking.” It links science and technology information, which hitherto stood alone, to support the next generation of ideas. By linking the information entered in the system, we provide opportunities to obtain knowledge and make unexpected discoveries from high-quality S&T information sources within and outside JST.

Helping you to find:

- Clues or hints for solving technical issues.
- Eligible researchers for joint research.
- Research with commercial potential at a certain university.



(As of November, 2021)



Connecting Japan -Lasting Access-

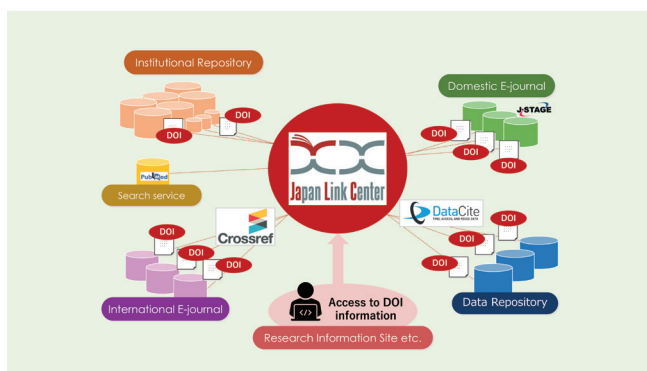


✉ info@japanlinkcenter.org

<https://japanlinkcenter.org/top/english.html>

The Japan Link Center (JaLC) * is the Registration Agency in Japan approved by the DOI Foundation. JaLC registers DOIs for Japanese academic content such as academic journal articles, books, research data, e-learning etc.

* It is administered jointly by National Institute for Materials Science, National Institute of Informatics, National Diet Library and Japan Science and Technology Agency.



Providing global access to Japanese digital research content

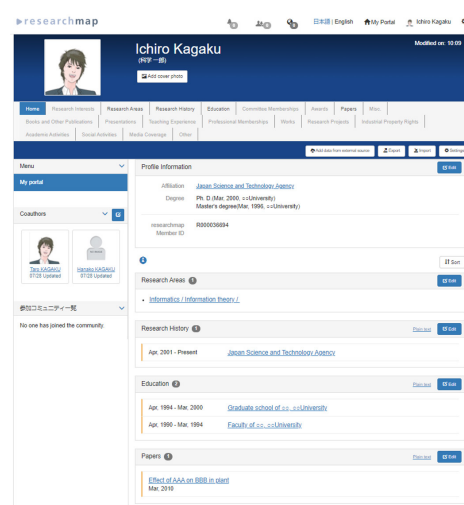
- Ensuring sustained access to content by registering DOIs.
- JaLC members can register DOIs.
- Collaboration with Crossref, DataCite and ORCID.



(As of October, 2021)


<https://researchmap.jp/public/inquiry/>
<https://researchmap.jp/?lang=en>

researchmap is a platform for managing, publishing, and sharing information on researchers in Japan. About 320,000 researchers have registered their profiles and research outputs on researchmap. researchmap has been integrated into the systems of universities and provides features to help users find researchers for industry-academia collaboration and joint research.



Make research activities management easier

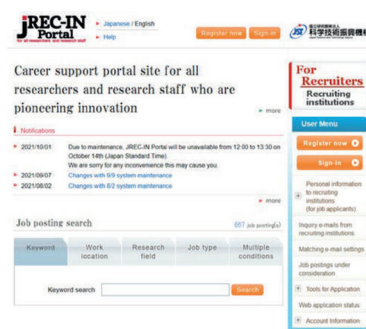
- Research achievements can be imported from external literature databases, and AI manages information for you.



Seeking career opportunities?
Looking for qualified researchers?


jrecinportal@jst.go.jp
<https://jrecin.jst.go.jp/seek/SeekTop?ln=1>

JREC-IN Portal is an informative portal site that supports the career development and skill-building of researchers, research assistants, technicians and other research-related human resources. JREC-IN Portal provides 21,000 public job openings per year and is accessed over 1.5 million times per month. The platform provides functions to satisfy all stakeholders.



High-quality services available for free

- Browsing
- Membership registration
- Job posting
- Personal information registration and update
- Job alerts

Exclusive services for recruiting members

- Post job information:
Information on job openings is sent to job-seeking members as matching e-mails
- Seek researchers' information to find highly qualified candidates
- Send inquiry e-mails:
Inquiries can be sent to job-seeking members

(As of March, 2021)



Japan's largest scientific, technological,
and medical database

JDream III

JDream III

✉ gsh-jd-help@cs.jp.fujitsu.com

<https://jdream3.com/>

JDream III is a comprehensive scientific, technological, and medical bibliographic database containing over 80 million records from sources in Japan and worldwide, including journals, proceedings, and technical papers. JDream III is provided by G-search. The database records are abstracted and indexed in Japanese with original thesaurus support. JDream III provides an exhaustive record of research output in Japan.



Find best research partners

JDream Expert Finder

JDream Expert Finder

✉ gsh-jd-help@cs.jp.fujitsu.com

https://jdream3.com/lp/expert_finder/

JDream Expert Finder is a service that enables you to search for the best research partners and key opinion leaders to solve your research problems. JDream Expert Finder is provided by G-search. It contains information on about 1 million researchers, and has analyzed and extracted more than 43 million pieces of JDream III literature information based on the theory of complex networks.



AI-based medical and pharmaceutical
literature search service

JDream SR

JDream SR

✉ gsh-jd-help@cs.jp.fujitsu.com

https://jdream3.com/lp/jdream_sr/

JDream SR is a service that uses AI to analyze domestic and overseas medical and pharmaceutical literature to discover the relationships between gene mutations, drugs, diseases, outcome indicators, etc., required for genomic medicine and health technology assessment (HTA). It efficiently extracts the information that doctors and evaluators need. JDream SR is provided by G-search.



Maximizing the value of life science data
through sharing and integration



✉ nbdc-kikaku@jst.go.jp

<https://biosciencedbc.jp/en/>

NBDC, the National Bioscience Database Center, works towards innovation through database integration. As of November 2021, NBDC provides a union catalog “Integbio Database Catalog” covering 2,511 domestic and international databases, “LSDB Cross Search” allowing users to search 728 databases simultaneously etc.



Database of JST research and
development programs



✉ projectdb_contact@jst.go.jp

<https://projectdb.jst.go.jp/>

This website is a public database of JST research and development programs. It contains outlines of over 23,900 research projects and related information, such as titles, researchers, affiliations, research periods, research areas, etc. This database provides sequential information for data which has already been consolidated. In addition, we provide data in response to requests from users such as those conducting data analysis for R&D management.



Integrated retrieval system for information on
national scientific research projects



✉ grants-contact@jst.go.jp

<https://grants.jst.go.jp>

GRANTS is a service that allows you to search for information on national scientific research projects in an integrated way. This system includes information on over 23,000 projects from JST Project Database and over 957,000 projects from Database of Grants-in-aid for Scientific Research (KAKEN). In the future, we plan to gradually expand the number of participating funding institutions and the scope of search results. This will hopefully contribute to seed searches by industry and information collection from research institutions and researchers, promoting greater connections with relevant parties.



Database of academic societies in japan

学会名鑑

学会名鑑

✉ gakkai@jst.go.jp

<https://gakkai.jst.go.jp/gakkai/>

Gakkai Meikan Database is a database of academic societies in Japan and is produced by JST, Science Council of Japan (SCJ), and Japan Science Support Foundation (JSSF). It contains outlines and related information, such as journals, founding date, the goals underlying establishment, etc.



Highly accurate machine translation system
for Chinese science and technology literature



日中・中日機械翻訳

✉ webmt@jst.go.jp

<https://webmt.jst.go.jp/>

Highly accurate neural machine translation system developed by JST and Kyoto University is now available online. By deep learning with over 5 million bilingual corpora, the system enables users to translate science & technology and patent literature, from Chinese to Japanese and vice versa with high accuracy.



Cross-search JST information services



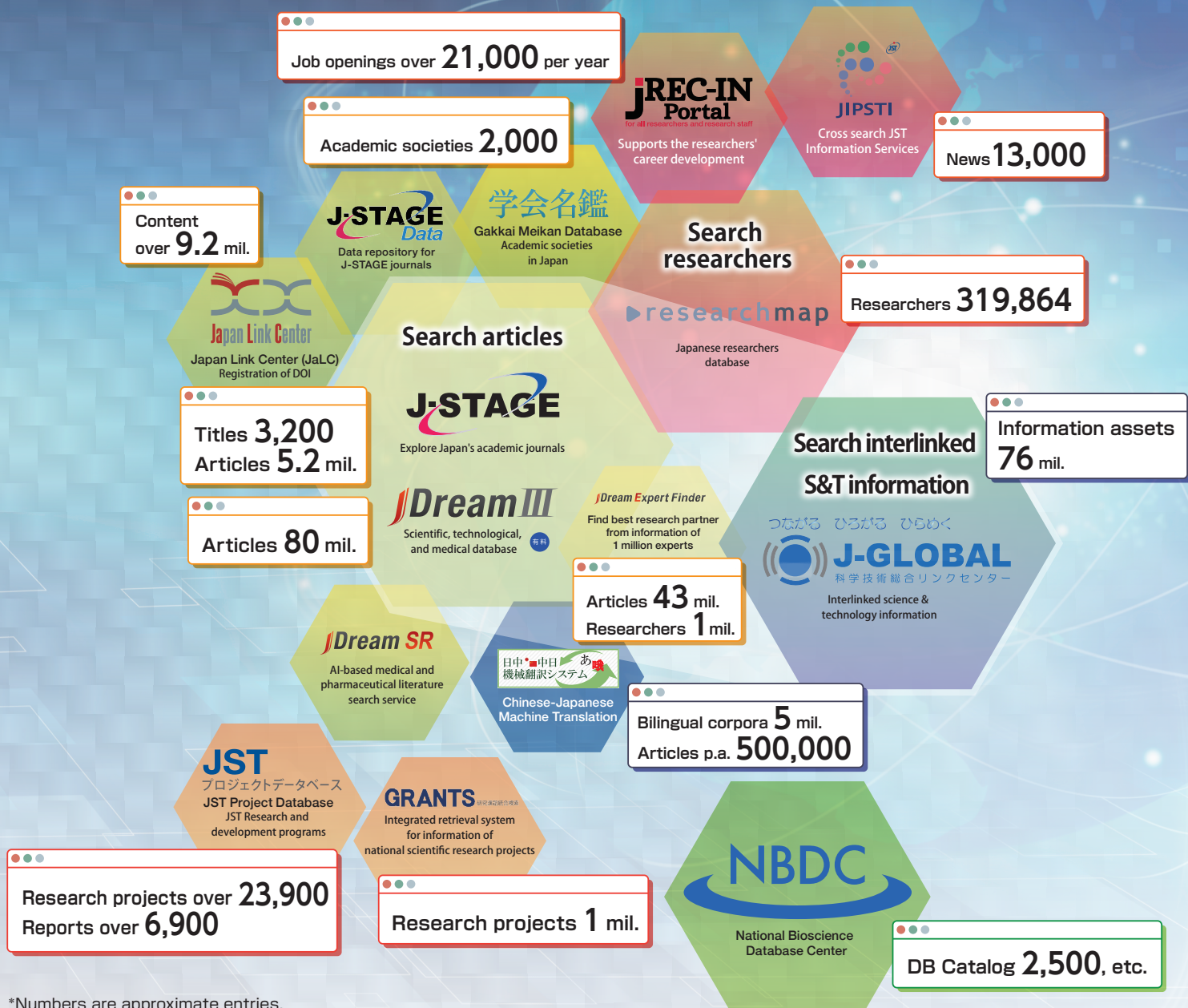
JIPSTI

✉ jipsti@jst.go.jp

<https://jipsti.jst.go.jp/>

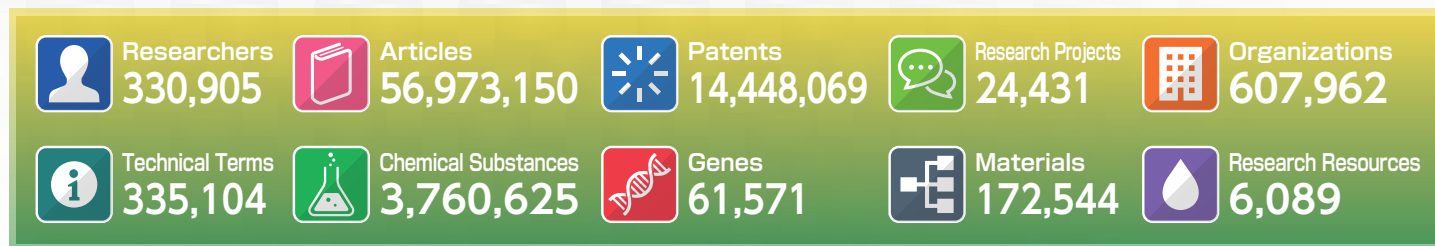
JIPSTI, Japan Information Platform for S&T Innovation, is a portal site for providing information about JST's information services including J-STAGE, J-GLOBAL, JaLC, researchmap, JREC-IN Portal, and NBDC. STI Updates, a part of JIPSTI's service, delivers the latest news and trends about production, management, sharing and utilization of S&T information.

Platform & Databases 15



*Numbers are approximate entries.

Information assets 10



*Numbers are approximate entries.



Japan Science and Technology Agency

Department for Information Infrastructure
Department of Information Planning
E-mail: helpdesk@jst.go.jp